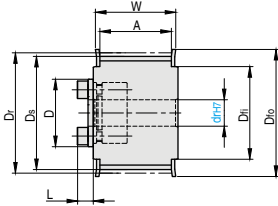
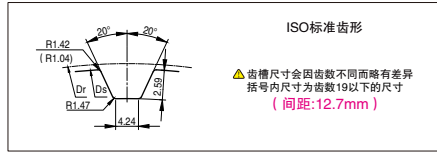
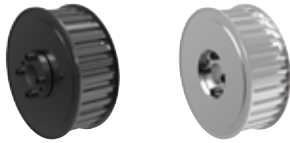
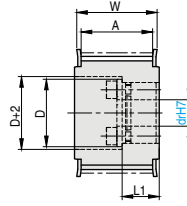


标准型 · 沉孔型

产品特点：是安装有标准型胀紧套的同步带轮。易于进行定位。



SEHEF
标准型



SEHEG
沉孔型

订购编号示例

1 代号 - 2 齿数 - 3 宽度代号 - 4 dr - 5 材料代码
SEHEF - 30 - 100 - 20 - G

| 1 代号 | 2 齿数 | 4 drH7 | | | | 主要尺寸 | | | |
|-------|--------|--------|-------|-------|--------|--------|--------|-----|-----|
| | | 075 | 100 | 150 | 200 | Dr | Ds | Dfo | Dfi |
| SEHEF | 14 | 12-16 | 12-16 | 12-16 | 12-16 | 56.6 | 55.22 | 61 | 45 |
| | 15 | 14-19 | 14-19 | 14-19 | 14-19 | 60.64 | 59.27 | 67 | 50 |
| | 16 | 14-20 | 14-20 | 14-20 | 14-20 | 64.68 | 63.31 | 70 | 56 |
| | 17 | 14-22 | 14-22 | 14-22 | 14-22 | 68.72 | 67.35 | 80 | 60 |
| | 18 | | | | | 72.77 | 71.39 | 80 | 60 |
| | 19 | 14-28 | 14-28 | 14-28 | 14-28 | 76.81 | 75.44 | 87 | 67 |
| | 20 | | | | | 80.85 | 79.48 | 87 | 67 |
| | 21 | 14-32 | 14-32 | 14-32 | 14-32 | 84.89 | 83.52 | 95 | 75 |
| | 22 | | | | | 88.94 | 87.56 | 95 | 75 |
| | 24 | 19-32 | 19-32 | 19-32 | 19-32 | 97.02 | 95.65 | 104 | 84 |
| | 25 | 19-32 | 19-35 | 19-35 | 19-35 | 101.06 | 99.69 | 111 | 90 |
| | 26 | 20-32 | 20-35 | 20-35 | 20-35 | 105.11 | 103.73 | 111 | 90 |
| | 28 | 20-32 | 20-40 | 20-40 | 20-40 | 113.19 | 111.82 | 123 | 102 |
| | 30 | 20-32 | 20-45 | 20-45 | 20-45 | 121.28 | 119.9 | 127 | 105 |
| | 32 | 20-32 | 20-50 | 20-50 | 20-50 | 129.36 | 127.99 | 135 | 115 |
| | 34 | | | | | 137.45 | 136.07 | 144 | 125 |
| | 36 | | | | | 145.53 | 144.16 | 152 | 130 |
| | 38 | | | | | 153.62 | 152.24 | 165 | 140 |
| | 40 | | | | | 161.7 | 160.33 | 170 | 150 |
| | 42 | | | | | 169.79 | 168.41 | 180 | 155 |
| 44 | 177.87 | | | | | 176.5 | 190 | 170 | |
| 48 | 194.04 | | | | | 192.67 | 205 | 180 | |
| 50 | - | - | - | - | 202.13 | 200.76 | 210 | 185 | |

| 1 代号 | 2 齿数 | 4 drH7 | | | | 主要尺寸 | | | |
|-------|--------|--------|-------|-------|--------|--------|--------|-----|-----|
| | | 075 | 100 | 150 | 200 | Dr | Ds | Dfo | Dfi |
| SEHEG | 14 | 12-16 | 12-16 | 12-16 | 12-16 | 56.6 | 55.22 | 61 | 45 |
| | 15 | 14-19 | 14-19 | 14-19 | 14-19 | 60.64 | 59.27 | 67 | 50 |
| | 16 | 14-19 | 14-19 | 14-19 | 14-19 | 64.68 | 63.31 | 70 | 56 |
| | 17 | | | | | 68.72 | 67.35 | 80 | 60 |
| | 18 | 72.77 | 71.39 | 80 | 60 | | | | |
| | 19 | 14-28 | 14-28 | 14-28 | 14-28 | 76.81 | 75.44 | 87 | 67 |
| | 20 | | | | | 80.85 | 79.48 | 87 | 67 |
| | 21 | 14-30 | 14-32 | 14-32 | 14-32 | 84.89 | 83.52 | 95 | 75 |
| | 22 | | | | | 88.94 | 87.56 | 95 | 75 |
| | 24 | 19 | 19-30 | 19-32 | 19-32 | 97.02 | 95.65 | 104 | 84 |
| | 25 | | | | | 101.06 | 99.69 | 111 | 90 |
| | 26 | 20-30 | 20-35 | 20-35 | 20-35 | 105.11 | 103.73 | 111 | 90 |
| | 28 | | | | | 113.19 | 111.82 | 123 | 102 |
| | 30 | - | 20-30 | 20-45 | 20-45 | 121.28 | 119.9 | 127 | 105 |
| | 32 | | | | | 129.36 | 127.99 | 135 | 115 |
| | 34 | | | | | 137.45 | 136.07 | 144 | 125 |
| | 36 | | | | | 145.53 | 144.16 | 152 | 130 |
| | 38 | | | | | 153.62 | 152.24 | 165 | 140 |
| | 40 | | | | | 161.7 | 160.33 | 170 | 150 |
| | 42 | | | | | 169.79 | 168.41 | 180 | 155 |
| 44 | 177.87 | | | | | 176.5 | 190 | 170 | |
| 48 | 194.04 | 192.67 | 205 | 180 | | | | | |
| 50 | - | - | - | - | 202.13 | 200.76 | 210 | 185 | |

▲ 选择内径时，在上表范围内参照所用胀紧套参数表进行选择 ▲ 挡片已铆接 ▲ 内孔表面有时可能未进行表面处理 ▲ 胀紧套有标准型与精巧型两种

胀紧套参数表

| drH7 | 最大许用扭矩 N·m | | D | L |
|------|------------|-------|------|-----|
| | 一般材质 | 无电解镀锌 | | |
| 12 | 44.1 | 36.2 | 28.5 | 6.5 |
| 14 | 63.7 | 50.9 | 30.5 | |
| 15 | 80.4 | 54.8 | 31.5 | |
| 16 | 83.3 | 58.8 | 33 | |
| 17 | 92.2 | 76.4 | 33.5 | |
| 18 | 95.1 | 80.3 | 34.5 | |
| 19 | 98.1 | 85.2 | 35.5 | 8 |
| 20 | 216 | 183 | 42 | |
| 22 | 255 | 201 | 44 | |
| 24 | 363 | 252 | 46 | |
| 25 | 392 | 264 | 47 | |
| 28 | 441 | 295 | 50 | |
| 30 | 500 | 396 | 52 | 8.5 |
| 32 | 530 | 423 | 54 | |
| 35 | 883 | 548 | 62 | |
| 40 | 1079 | 779 | 67 | |
| 45 | 1285 | 882 | 72 | |
| 50 | 1706 | 1362 | 77 | |

| 3 宽度代号 | 皮带宽度 | 主要尺寸 | | |
|--------|------|----------------------|----|----|
| | | L1 | W | A |
| 075 | 19.1 | 18 | 26 | 21 |
| 100 | 25.4 | 22 23.5 (内径 ≥ 24) | 32 | 27 |
| 150 | 38.1 | 28 32 (内径 ≥ 35) | 45 | 40 |
| 200 | 50.8 | 35 39 (内径 ≥ 35) | 59 | 54 |

| 代号 | 类型 | 5 材料代码 | 材质 | | | 表面处理 | | |
|----------------|------------|------------------|-----|------|-----|----------|----------|----------|
| | | | 带轮 | 挡片 | 胀紧套 | 带轮 | 挡片 | 胀紧套 |
| SEHEF SEHEG | 标准型 沉孔型 | G H J K | 45# | SPCC | 45# | 四氧化三铁保护膜 | 四氧化三铁保护膜 | 四氧化三铁保护膜 |
| | | | | | | 无电解镀锌 | 无电解镀锌 | 无电解镀锌 |
| | | | | | | - | - | - |
| | | | | | | 本色阳极氧化处理 | 本色阳极氧化处理 | - |